

# PROJECT REFERENCE



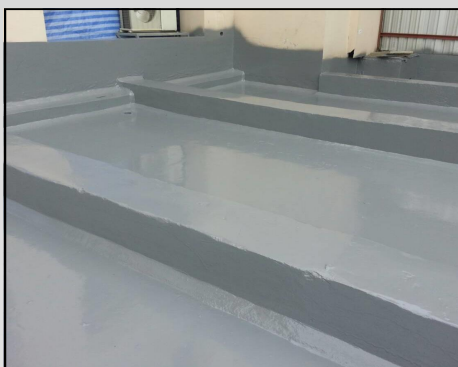
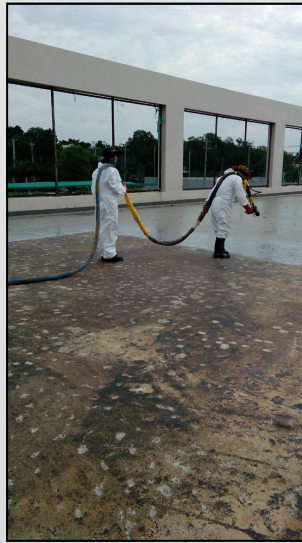
# HAMMERSMITH

## POLYUREA WATERPROOFING - THANA CITY GOLF AND COUNTRY CLUB

Continuous water leakage issues from both the Club House podium and the tennis courts above the car park and golf buggy charging area were a constant cause for concern and had led to considerable physical and property damage over a number years.

The implementation of a total refurbishment of the clubs facilities finally gave an opportunity for the installation of a long term, "state of the art" solution.

Hammersmith proposed and installed SPI's **ElastaFLEX HP** Elastomeric Polyurea Roof Deck Waterproofing system over some 5,000m<sup>2</sup> of the outdoor tennis courts, multi-sports court and podium



**"SPECIALIST SOLUTIONS  
FOR THE  
CONSTRUCTION INDUSTRY"**

**HAMMERSMITH LIMITED**

171 Soi Lad Prao 26, Ladprao Road

Chompol, Chatuchak,

Bangkok, 10900, THAILAND

Phone: (+66 81 617 2139)

Email: [email@hammersmithgroup.com](mailto:email@hammersmithgroup.com)

Web: [www.hammersmithgroup.com](http://www.hammersmithgroup.com)