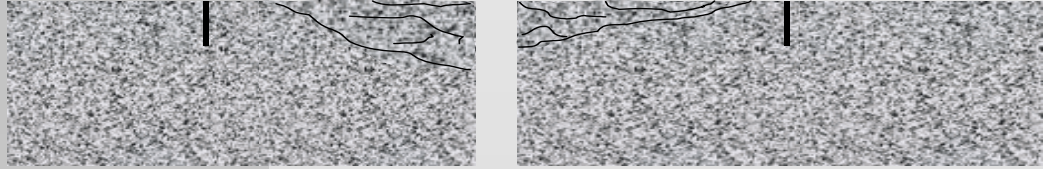
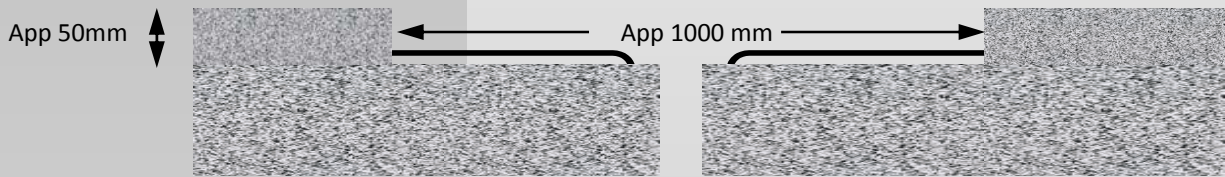


Heavy Duty Expansion Joint Repair

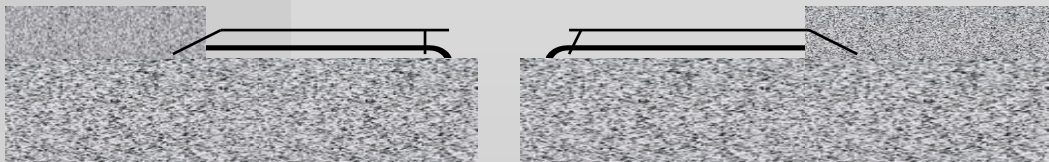
- 1 Remove existing expansion joint material and saw cut slab to a depth of app. 50 mm. Saw cut to be in sound concrete beyond extreme edge of existing repair or failing concrete.



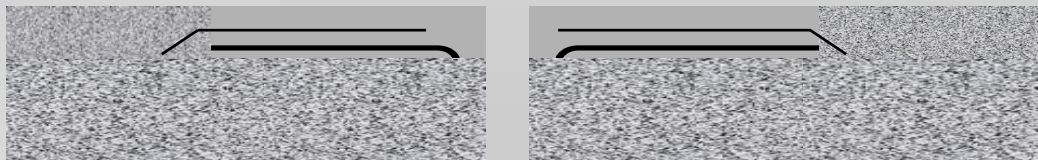
- 2 Cut chase in slab to form recess for repair exposing main reinforcement bars in slab.



- 3 Fix additional layer of 50 x 50 x 3 mm mesh reinforcement



- 4 Recast slab edge and joint shoulder using Densitop "Ferotop" mortar applied using vibratory screed



- 5 Apply "Metazote" joint material

