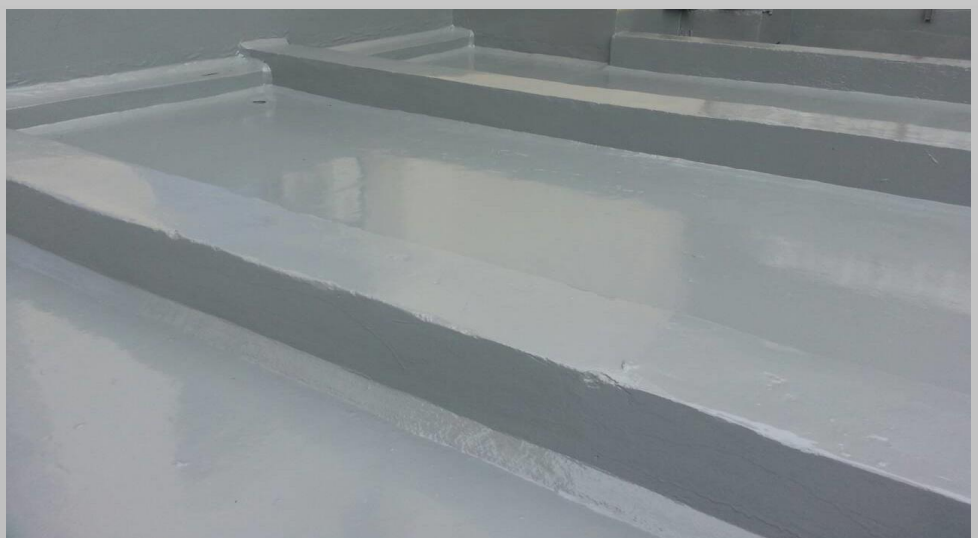
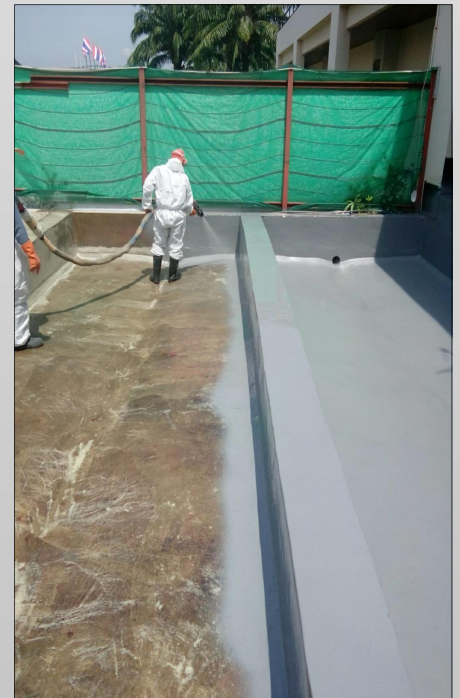




## HOT APPLIED PLURAL COMPONENT POLYUREA

Polyurea's are highly versatile water-proofing and containment system that lend themselves to a wide range of applications from tank and deck linings to the refurbishment of zinc alume sheet roofs.

Extremely rapid curing times and little or no odor allow for rapid installation times and very quick project turnaround.



**"SPECIALIST SOLUTIONS  
FOR THE  
CONSTRUCTION INDUSTRY"**

**HAMMERSMITH LIMITED**

171 Soi Lad Prao 26, Ladprao Road

Chompol, Chatuchak,

Bangkok, 10900, THAILAND

Phone: (+66 81 617 2139)

Email: [email@hammersmithgroup.com](mailto:email@hammersmithgroup.com)

Web: [www.hammersmithgroup.com](http://www.hammersmithgroup.com)